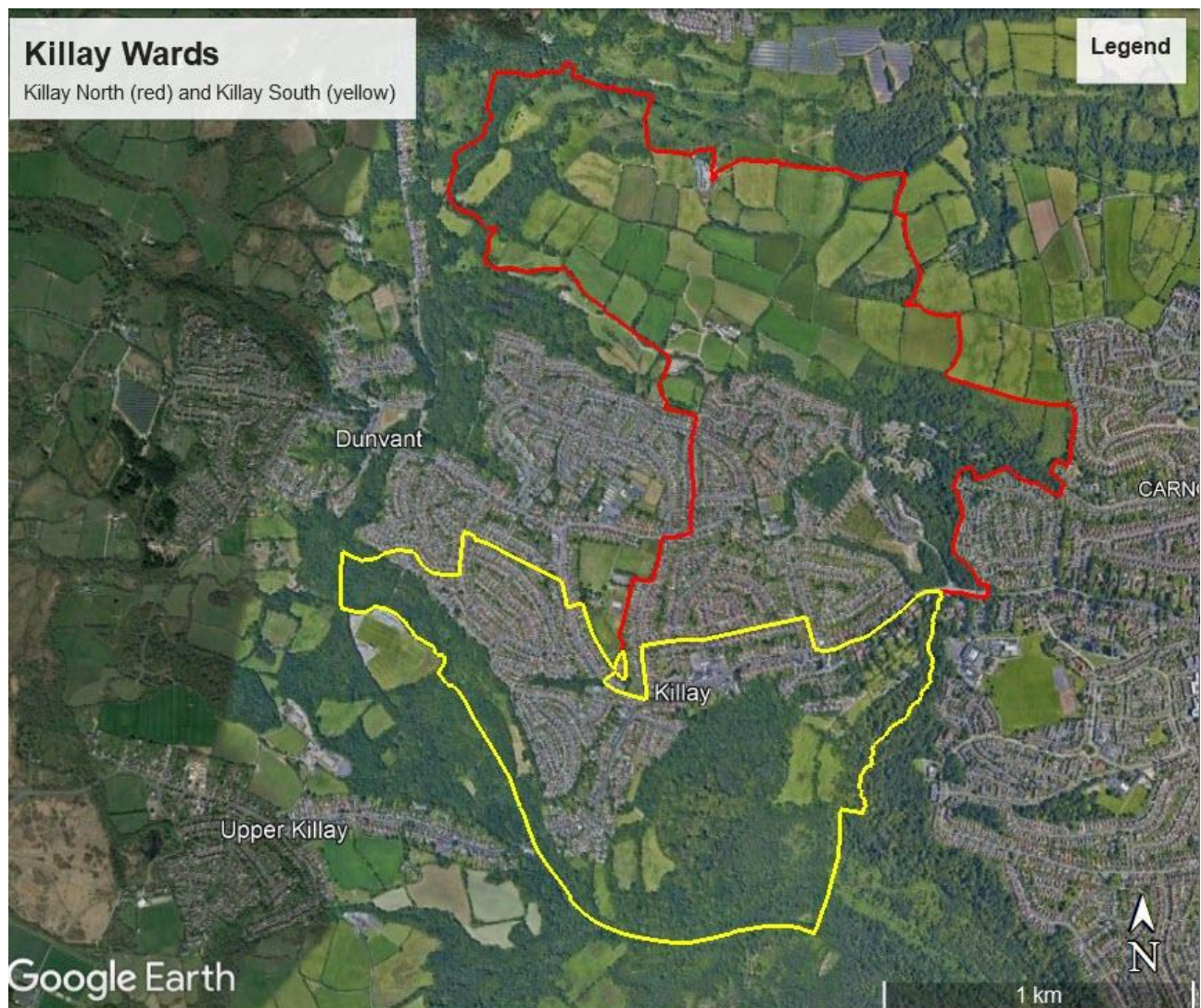


Introduction

Killay is a residential area on the western fringe of Swansea City conurbation. It covers an area of approximately 300 hectares and is home to roughly 5,000 people according to the 2021 census. It was originally a farming and mining community and although now part of Swansea City, Killay still retains a definite identity and is referred to, by many residents, as the village. It has a shopping area mainly clustered around the A4118 Gower Road running through it from east to southwest.



There are still semi-rural areas to the north and south, giving a split of approximately 50% green spaces and 50% houses. It is the gardens of properties which create the green areas and green corridors for wildlife to exist, move around and, hopefully, flourish.

Killay Community Council (KCC) covers the former City Council Wards of Killay North and Killay South. The boundary has not been changed to reflect the amalgamation of Killay North and Killay South and Duvant as a new City Council ward.

*Note. As at 4/8/25 we are awaiting a final decision by Welsh Government on the Town & Community Council Boundaries review.

Overarching Acts, Policies and Statements that apply for the area of Killay Community Council

The overarching Act that Local Authorities and Town & Community Councils in Wales have to comply with is the Environment (Wales) Act 2016.

<https://www.legislation.gov.uk/anaw/2016/3/section/6>

“A public authority must seek to maintain and enhance biodiversity.....”

A factsheet published by Welsh Government summarises the main points of the Act relating to actions required by Community Councils.

<https://www.gov.wales/sites/default/files/publications/2020-08/environment-wales-act-2016-biodiversity-resilience-ecosystems.pdf>

The Environment (Wales) Act 2016, Section 6(7) requires Community Councils to publish a 3 yearly plan.

In addition, the Wellbeing of Future Generation (Wales Act 2015 also encompasses responsibilities for “improving the social, economic, environmental and cultural well-being of Wales”

This Act requires that the City Council and, where applicable* Town & Community Councils need to comply with necessary legislation.

This includes Planning applications and permissions [Biodiversity and Development - Swansea](#)

[Guidance note: biodiversity enhancements - Swansea](#)

*A community council is subject to compliance with the objectives of the Well-being of Future Generations Act (Wales) 2015 only if, for each of the preceding three financial years prior to the local well-being plan for its area being published, either its gross income or its gross expenditure was at least £200,000.

City and County of Swansea Biodiversity Action Plan is here [Swansea Local Biodiversity Action Plan - Swansea](#)

City and County of Swansea declared a Climate Emergency which encompasses Biodiversity.

[Climate change and nature recovery - Swansea](#)

In normal years, we arrange several events for various members of our community. For the majority of these, we need to procure a variety of items. If there are several options available to us, we always select the most environmentally protective and climate positive supplier. We already use green energy to run the Christmas lights in The Precinct and strive to undertake recycling at these events

Gardening Committee

1. In areas we manage, we will look to nature-based solutions. For example, when weeding the flower beds in The Precinct, we will only weed by hand and not by chemical methods. T
2. Our flower displays, which we pay CCS for, we will actively ask that soil provided is peat free and that the flowers supplied are native species.
3. For other areas, in consultation with CCS, we seek to enhance and promote the planting of native wildflowers and daffodils.

4. We will promote biodiversity and climate resilience in our work with residents. We will create an annual Best Wildlife Garden Competition, for both adults and children in the Killay area.

The Wildflower Patch

In June 2025 KCC accepted the proposal to continue with the maintenance of the wildflower patch. (See appendix 1 'A case for Retaining the Wildflower Patch' This will meet our statutory duty to enhance biodiversity in Killay. It was agreed to incorporate the following into our Biodiversity Plan:

- Due to the unpredictable nature of our weather patterns, expert advice on a regular basis will be sought on how to maintain the native wildflower patch, particularly in relation to mowing at the correct time of year. and replanting hemi-parasitic plants such as Yellow Rattle.
- We follow the advice of and consult on a regular basis with organisations like the Wildflower Trust and Celtic Wildflowers, Penllergaer.
- KCC will identify councillors responsible for mowing at the correct time of year based on advice and that a risk assessment will be carried out before doing this.
- All reasonable steps will be taken to remind Swansea Council's Parks department that KCC has established a wildflower patch and to exclude the area from their mowing regime.
- Money is set aside from the gardening budget to purchase yellow rattle plugs to increase the biodiversity of the area and to install clear signage and robust borders for the native wildflower area
- Consider how we can educate the public about the necessity of wildflower patches in urban areas by providing links to expert advice on our social media.

Partners

1. We will work with Swansea Council to enhance Killay Marshes Nature Reserve.
2. We will help to promote and provide a platform for engagement for community groups with biodiversity aims e.g., Clyne Valley Community Project
3. In our two roles as Community Governors, one in Duvant Primary School and the other in Hendrefoilan Primary School, we will work with staff and pupils to enhance and protect biodiversity.

Statutory Roles

1. In our role as consultee under the Town and Country Planning Act- we will uphold the pillars of the Wellbeing of Future Generations Act in our consultee responses and pay due attention to Planning Permissions that may infringe upon these green spaces
2. In our role as Footpath Committee, we will enhance and promote biodiversity as well as the Active Travel Plans for Killay through to other destinations. [Active travel - Swansea](#)

Review Date July 2028

Biodiversity action plan within the area of Killay Community Council

KCC Committee	Action	Time Period	Evaluation
Public Rights of Way	PRoW committee appoint a link person to liaise with CVCP.	July 2025 to July 2028	
Finance Committee	Commit funds for replenishment of area. (See 'A Case for Retaining the Wildflower Patch at St Hilary's Church by SG)	July 2025 to July 2028	
Social media	Use Facebook and website to promote events e.g RSPB Birdwatch event 27-29 January 23 Periodically, ask the Community what they want us to do in terms of promoting biodiversity	July 2025 to July 2028	
Planning	Include biodiversity and a net gain approach when commenting on planning applications Influence City Council for nature-based solutions for big infrastructure works in the area.	July 2025 to July 2028	
Community Governors	Establish links between Schools and council departments and community groups e.g. Keep Wales Tidy Clyne Valley Community Project	July 2025 to July 2028	

	Swansea Council Nature Conservation Team		
Gardening	Continue to set aside funds for the maintenance of the Wildflower Patch	July 2025 to July 2028	